

# Refinery Gas Analyzer – Model 1001

- Sample types: Gas
- Simple, lowest-cost refinery/light hydrocarbon gas analysis solution
- Single channel – single thermal conductivity detector (TCD)
- Rugged packed columns – no degradation from H<sub>2</sub>O, NH<sub>3</sub> or other common contaminants
- Limited hydrogen detection range (see Model 1101 for full-range capability)
- 35-40 minute analysis time (see Model 1015 for faster analysis time)

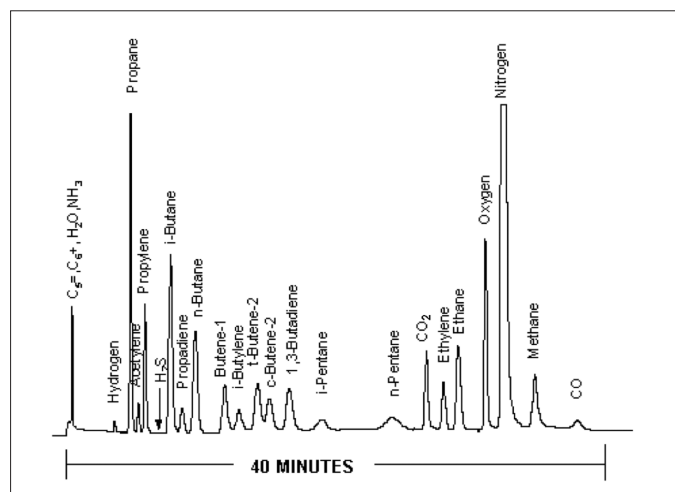
## Key Benefits

- Meets:
  - ASTM D1945
  - ASTM D1946
  - ASTM D2597
  - UOP 539-87
  - DIN 51872-4
- Plumbed with sulfur-resistant materials to enhance H<sub>2</sub>S detection
- Guaranteed detection ranges/concentration levels

## Detected Compounds

- H<sub>2</sub>, O<sub>2</sub>, N<sub>2</sub>, CO<sub>2</sub>, CO, H<sub>2</sub>S, C<sub>1</sub> through C<sub>5</sub>, C<sub>5</sub>=/C<sub>6</sub>+/H<sub>2</sub>O/NH<sub>3</sub> composite peak

	Min (%)	Max (%)
<b>Channel B (TCD)</b>		
C <sub>5</sub> =, C <sub>6</sub> +, H <sub>2</sub> O and NH <sub>3</sub> composite	0.01	40
H <sub>2</sub>	1	10
H <sub>2</sub> S	0.1	25
All other components except C <sub>5</sub> =	0.01	100



Analysis of H<sub>2</sub>, O<sub>2</sub>, N<sub>2</sub>, CO<sub>2</sub>, CO, H<sub>2</sub>S and C<sub>1</sub> through C<sub>5</sub> by TCD.

PerkinElmer Life and Analytical Sciences  
710 Bridgeport Avenue  
Shelton, CT 06484-4794 USA  
Phone: (800) 762-4000 or (+1) 203-925-4602  
[www.perkinelmer.com](http://www.perkinelmer.com)

**ARNEL**  
Engineered Analytical Solutions

  
**PerkinElmer**  
precisely.

For a complete listing of our global offices, visit [www.perkinelmer.com/lasoffices](http://www.perkinelmer.com/lasoffices)

©2006 PerkinElmer, Inc. All rights reserved. The PerkinElmer logo and design are registered trademarks of PerkinElmer, Inc. All other trademarks not owned by PerkinElmer, Inc. or its subsidiaries that are depicted herein are the property of their respective owners. PerkinElmer reserves the right to change this document at any time without notice and disclaims liability for editorial, pictorial or typographical errors.