

Refinery Gas Analyzer – Model 1016

- Sample types: Gas
- Dual channel – dual thermal conductivity detector (TCD/TCD)
- Rugged packed columns – no degradation from H₂O, NH₃ or other common contaminants
- Limited hydrogen detection range (see Model 1116 for full-range capability)
- Critical butene-1/isobutylene separation
- Includes Model 3062 Software, which contains a merge program to combine multichannel data into one report

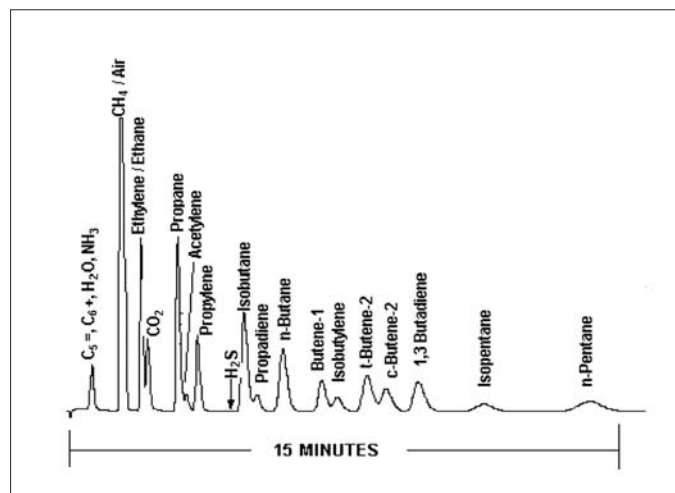
Detected Compounds

- H₂, O₂, N₂, CO₂, CO, H₂S, C₁ through C₅, C₅=/C₆+/H₂O/NH₃ composite peak

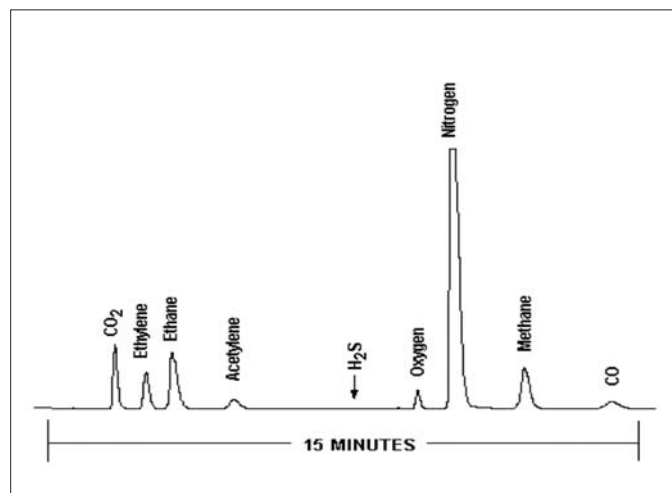
Key Benefits

- Meets:
 - ASTM D1945
 - ASTM D1946
 - ASTM D2597
 - UOP 539-87
 - UOP 709
 - DIN 51872-4
- Rapid, 15-minute analysis time
- Plumbed with sulfur-resistant materials to enhance H₂S detection
- Guaranteed detection ranges/concentration levels:

| | Min (%) | Max (%) |
|--|---------|---------|
| Channel A (TCD) | | |
| C ₅ =/C ₆ +/H ₂ O/NH ₃ composite | 0.02 | 40 |
| H ₂ S | 0.10 | 25 |
| CO ₂ | 0.01 | 25 |
| All other components | 0.01 | 100 |
| Channel B (TCD) | | |
| H ₂ | 1 | 10 |
| H ₂ S | 0.02 | 100 |
| All other components | 0.01 | 100 |



Channel A – TCD.



Channel B – TCD.

PerkinElmer Life and Analytical Sciences
710 Bridgeport Avenue
Shelton, CT 06484-4794 USA
Phone: (800) 762-4000 or
(+1) 203-925-4602
www.perkinelmer.com



For a complete listing of our global offices, visit www.perkinelmer.com/lasoffices

©2006 PerkinElmer, Inc. All rights reserved. The PerkinElmer logo and design are registered trademarks of PerkinElmer, Inc. All other trademarks not owned by PerkinElmer, Inc. or its subsidiaries that are depicted herein are the property of their respective owners. PerkinElmer reserves the right to change this document at any time without notice and disclaims liability for editorial, pictorial or typographical errors.